

Stag Theatre & Stag Plaza

Technical Specifications and General Constraints

General Constraints

The Stag Sevenoaks functions as a excellent value, low hire charge venue in line with its objectives of serving both its community as well as that of professional hirers.

One way of maintaining a low cost base is to control the amount of technical input hours per show to an economic level in line with an all-in single hire charge. We are always pleased to discuss other requirements for which we would be happy to provide estimates on a time and materials basis. The notes below hope to convey why we think our approach meets Hirers' needs for a low-cost venue.

Operations Meeting: We aim to completely understand the needs of our hirers and with this in mind we hold a pre-performance operations meeting to discuss all administrative, front of house and technical requirements of your show. This is most usefully done at the Stag but we can arrange a tele-conference call with you and your technical operators if that is more suitable for you.

Lighting : A comprehensive fixed rig is offered, designed to meet the needs of most hirers (based on our experience of their requirements). Minor alterations to this rig to meet specific requirements are possible without charge and typically done on the day of the performance.

We prefer not to make major alterations to the rig but are happy to do so where the complexity of your show may demand it. These changes would be discussed in detail at the operations meeting in advance of the performance date. If alterations are agreed, a condition will be that the rig is returned to the fixed design. In the event that the rig is not returned to the fixed design a re-focussing charge will be made.

Sound : A fixed stereo system newly installed in 2015 which has been tuned to the auditorium. It is controlled by an Allen & Heath QU32 32 channel digital sound desk. The system includes mid-auditorium flown delayed infill speakers.

Sets : We aim to accommodate most hirer set requirements provided that we believe they meet sensible health and safety criteria – we do not want anyone exposed to undue risk on our premises and we believe that Hirers will understand our position.

We want to work cooperatively with hirers, so any hirer who feels that their set requirements may be in some way innovative or pushing the boundaries is encouraged to discuss their plans at the earliest opportunity and particularly in detail at the operations meeting.

Pyros/Strobes /Special Effects/Other Potentially Dangerous Performance Elements We want to accommodate as wide a range of technical innovation as possible within the bounds of normal regard for the safety of audience, performers and our staff. We are happy to discuss any such performance elements with Hirers at the earliest possible opportunity. All such performance elements will be subject to individual risk assessment (please email operations@stagsevenoaks.co.uk for a risk assessment template) and may only be included in performances with express permission of Stag management and under the control of an ASP qualified technician.

The Stag Theatre

Stage dimensions

Effective acting area 10.4m wide x 12m deep
SR wall to SL wall 18.25m
Front of apron to rear hemp bar 12.0m
Width of proscenium 10.45m
Depth of apron to below pros 2.1m
Back dock 11.5m wide x 8m deep (quarter depth occupied by bleachers)
Dock Doors USR wall from lorry lift 2.09m wide x 1.80m high

Grid

Grid height downstage 5.95m dropping quite suddenly to 5.20m at the hemp bars
LX Advance Bars 1 – 4 FOH Electric winch bars 250Kg SWL
LX 1 first above the pros. Electric winch bar 250Kg SWL
LX 2 – 8 - Hand winch bars 250Kg SWL
Hemps 1 – 3: At rear of stage; lift cloths + track only

Principle diagrams are given in pp2-6 below. Downloadable versions including high resolution versions of all the technical diagrams for the Stag Theatre can be found at:

<http://www.stagevenoaks.co.uk/facilities/hireandservice>

Track

One full length Triple-E Unicyc with runners.
One full length Triple-E Erail with runners.

Masking

Six 5.2m x 2m black legs
Various serge black legs and cloths

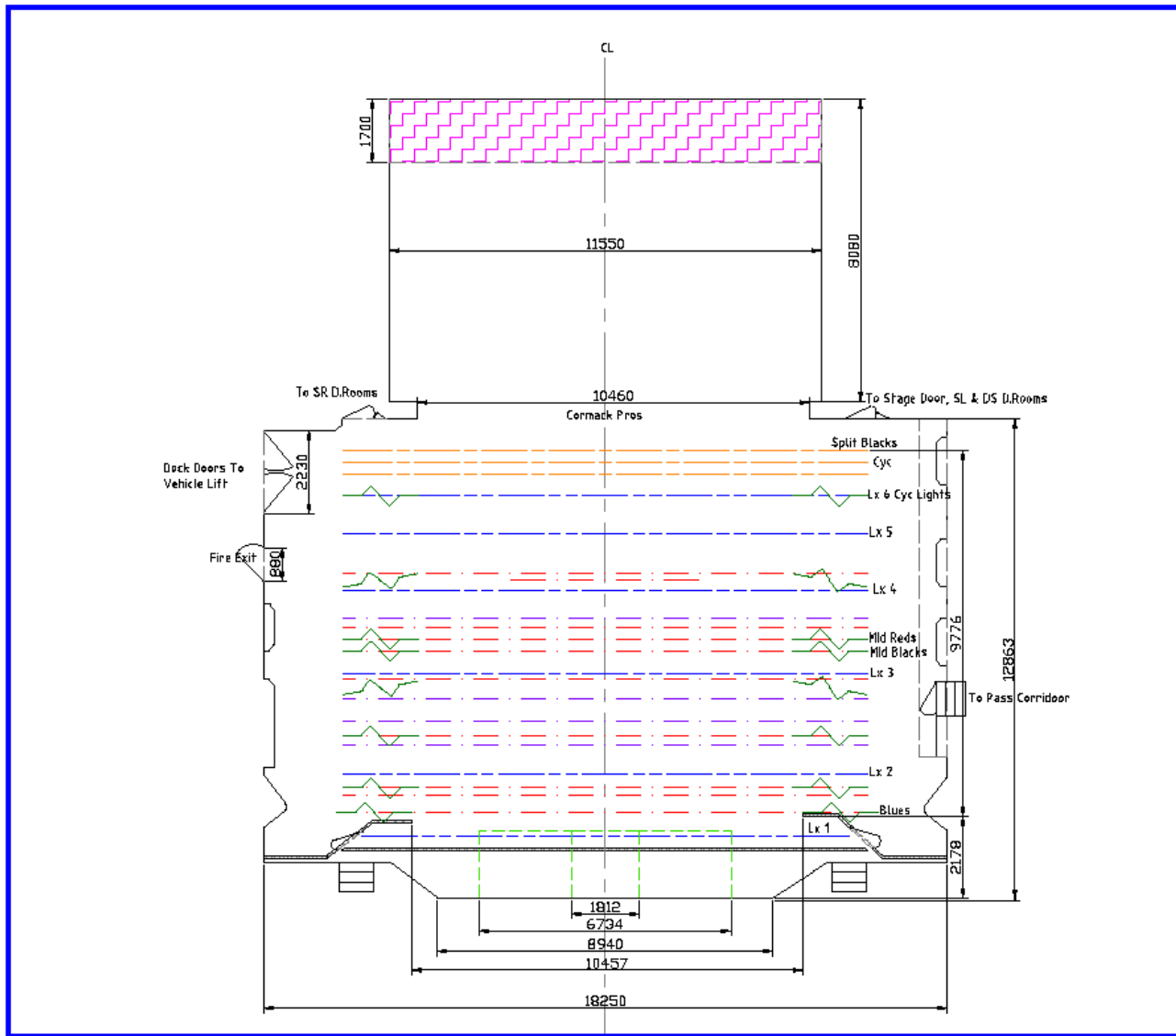
Tabs

Pale blue house tabs operated by electric winch in SL wing.
Variable speed; full open to full close over the range 6-64 seconds.

Midstage red tabs – 6.0m upstage from pros. Operated by hand pulley in SR wing
Midstage black tabs – 5.5m upstage from pros. Operated by hand pulley in SR wing

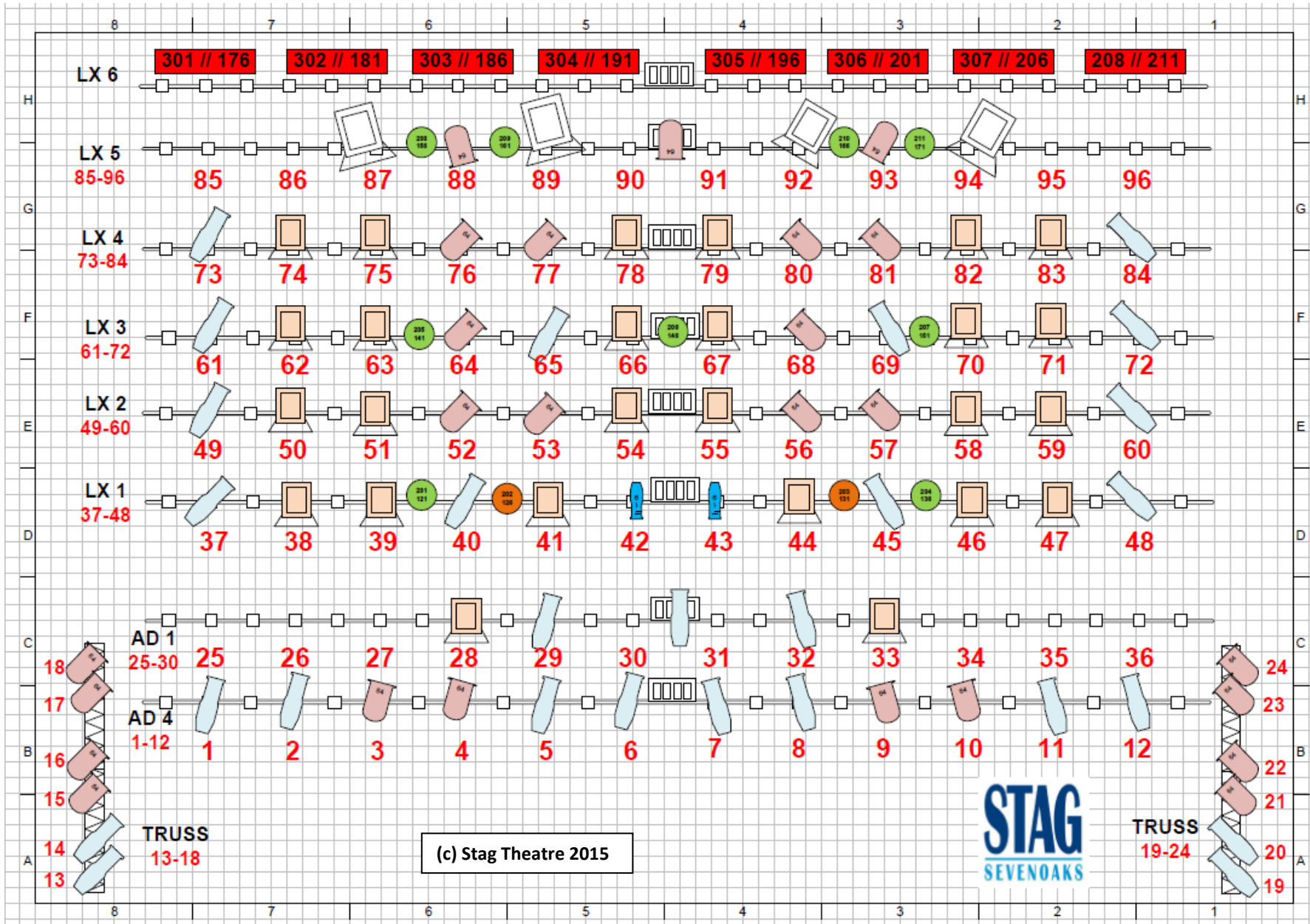
Orchestra Pit DSC

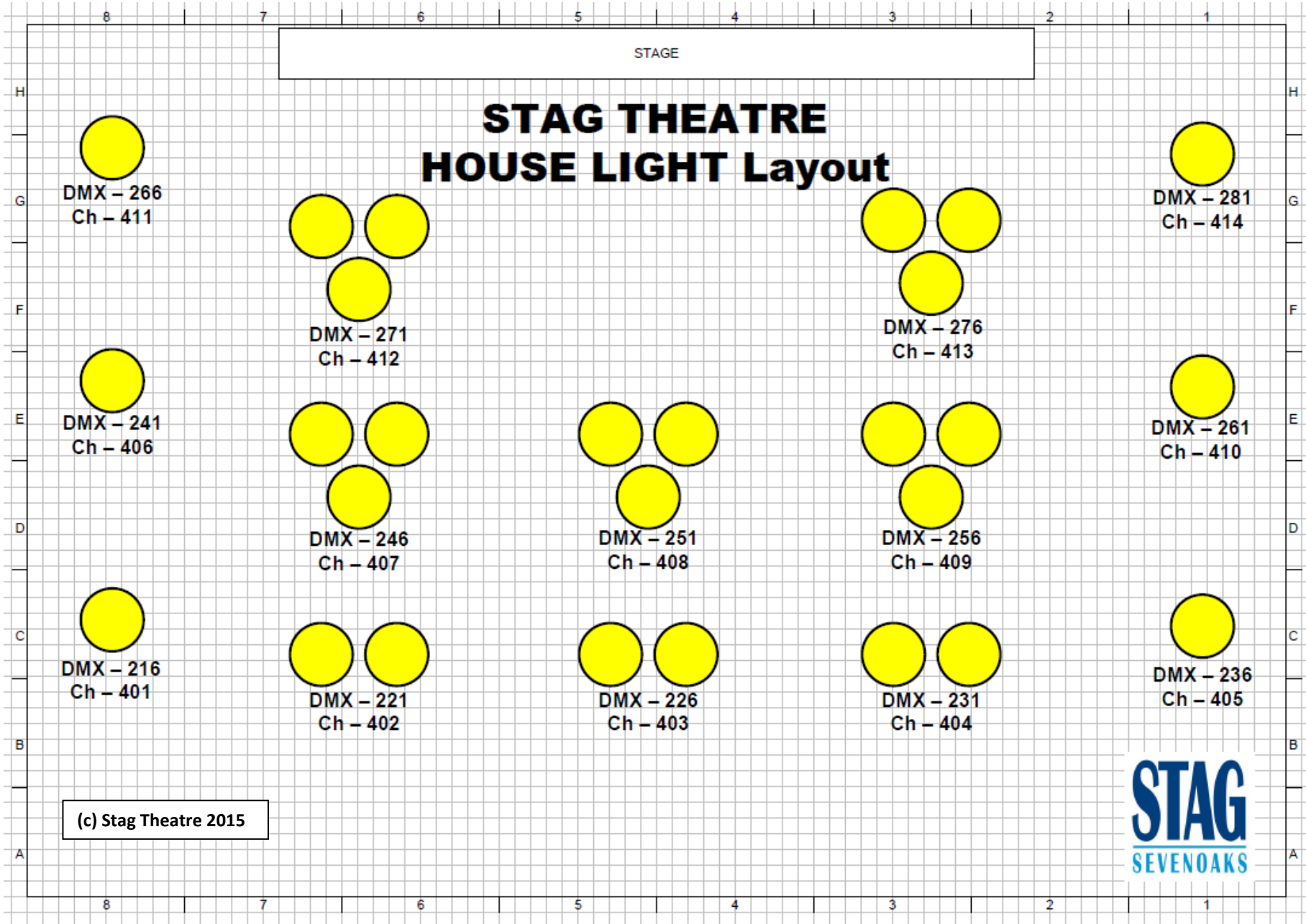
Needs four people minimum to remove lid. **This must include at least 1 member of venue crew.** Others may be provided by the hirer but for safety, personnel must be acceptable to the venue. Extra personnel can be provided by the venue at additional cost.

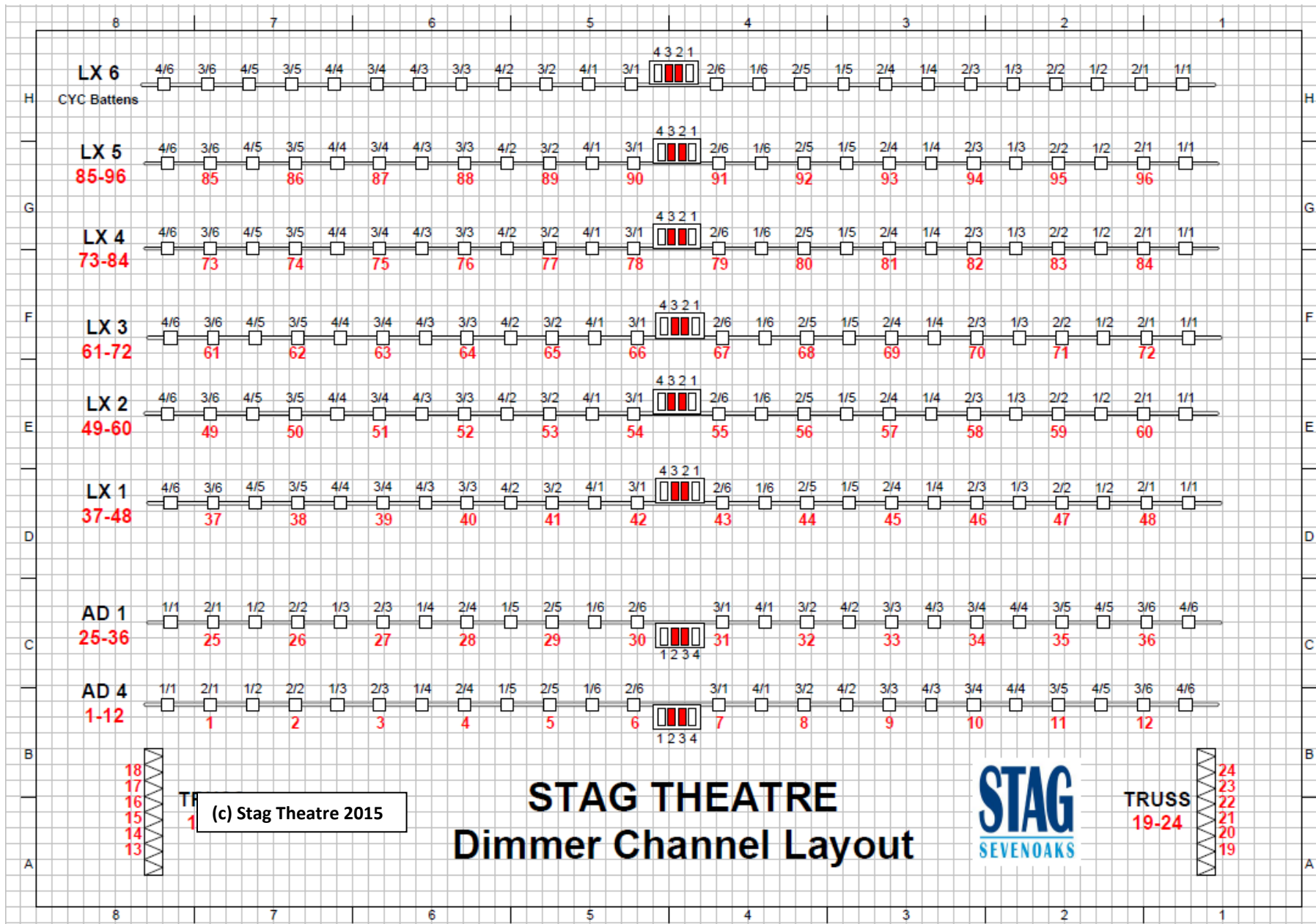


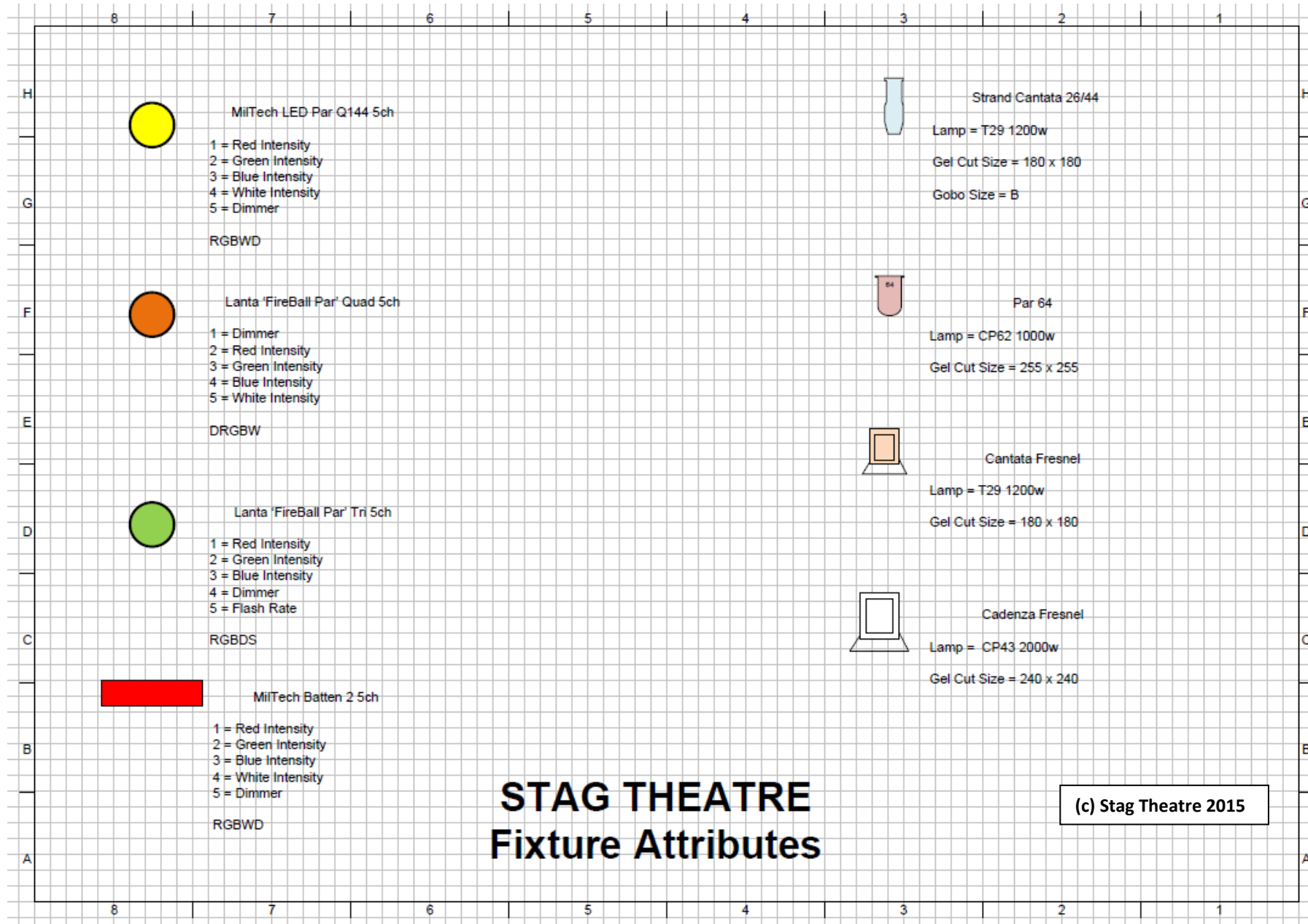
RevNo	Date	Revision note
Notes All measurements in millimeters unless otherwise stated		
Key		
—	Centre Line	
—	Hang Bars	
—	Soft Masking	
—	LX Bars	
—	Winch Bars	
—	Fixed Bars	
—	False Pros	
—	Flys Catwalk	
—	Pit	
—	Cormack Seating	
©		
STAG SEVENOAKS		
Drawing Title		Stag Theatre Plan A3
Drawn by		Amanda Vickers
Scale	Date	
1:100 on A3	23/08/2016	
Dwg No.	Revision	
6	-	

(c) Stag Theatre 2016









STAG THEATRE Fixture Attributes

(c) Stag Theatre 2015

Backstage Facilities

Dressing Rooms

Stage Level SR

- SR1 – Capacity: 4 incl. shower, sink and toilet
- SR2 – Capacity: 4 incl. shower, sink and toilet
- The Limelight Room – Capacity: 10 incl. two sinks

Stage Level SL

- SL1 – Capacity: 4 Incl. shower and sink. Toilet Adjacent
- SL2 – Capacity: 4 Incl. shower and sink. Toilet Adjacent
- SL3 – Capacity: 2

Basement

- The Crown– Capacity: 30, toilets M/F adjacent
- The Majestic – Capacity: 30, toilets M/F adjacent
- The Palace – Capacity: 20, toilets M/F adjacent

Lighting

ETC ION XE20 Console (2 Universes of DMX)

Additional LX Equipment

2 x Teclumen Arena 1200 MSR follow spot each with colour magazine
(operators provided at additional charge)

An assortment of gobos

10 x Par 64

6 x 1.5 KW Fresnel

4 x 1 KW CCT Silhouette SIL15 Profiles

1 x 30cm Mirror ball and rotator

1 x 75cm Mirror ball and rotator

6 x heavy duty floor booms with arms

1 x Atomic DMX Strobe (*)

8 x Chauvet Colorado colour battens (RGBWA LED) (freestanding) (*)

4 x Mac700 (700W) moving head profile (CMY color mixing & gobo wheel) (*)

Le Maitre MVS DMX controlled haze (*)

JEM Magnum Pro 2000 DMX controlled smoke (*)

2 x Kam iLink GBC DMX controlled laser pattern projectors (*)

2 x 5m x 6m RGB DMX Controlled Starcloths (fills the stage area) (*)

(*) Additional charge

Heavy Mains (DSL)

2 x 63 1Ø

1 x 63 3Ø

63 3Ø Bus Bar

Sound

Fixed Stereo rig balanced for the auditorium:

EV ELX115P Tops

EV ELX118P Subs

Delay monitors: 4 x Brooke INH10

Stage monitors: 2 x RCF (Flown on LX1)

Extra Monitors 2 x EV ELX112

5 Spare amp channels at 500W each

(4 x Speakon Patch to stage 2 x SL, 2 x SR)

Allen & Heath QU32 sound desk: 32 input channels

Permanent Analogue Multicore to stage (32 send 4 return)

2 x Tascam CD – 200SB including USB

3.5mm jack in (AUX lead (For iPods & laptops etc.))

Microphones

7 x Shure SM57

3 x Shure SM58

4 x Beyer Dynamic handheld vocal microphones

2 x AKG C3000 condenser microphone

1 x AKG D310 handheld microphone

1 x AKG C747 condenser lectern microphone

1 x Crown LM300A lectern microphone

2 x Beyer Dynamic Opus 51 surface / boundary microphones

Sennheiser drum kit set (with 2 pencil overheads)

Wireless microphones (Additional cost)

Sennheiser XSW 12-B beltpack and lapel microphone (channel 606.900MHz)

Sennheiser XSW 35-B hand held microphone (channel 606.500MHz)

Additional microphones (wired or wireless) can be provided at additional charge

Additional sound equipment

29 x RAT Illuminated music stand

1 x RAT Illuminated conductor's stand

12 x boom microphone stands

8 x DI box

Portable mains / battery operated mono PA system including microphone

Ideal for rehearsals or speeches (additional charge)

- 3 channel input:

○ XLR

○ ¼" socket

○ L/R phono

Miscellaneous Kit

Risers

- 12 @ 2m x 1m Aluminium framed,
- 2 @ 1m x 1m Aluminium framed,
- 12 legs @ 80cm
- 12 legs @ 60cm
- 24 legs @ 40cm
- 24 legs @ 20cm

Pianos

- Korg SP-250 electric piano (*)
- Full range 88 weighted action keys.
- Built in metronome plus reverb and chorus effects.
- Built in speakers for rehearsal use.

(*) additional cost

Upright (Stage, Plaza or principal dressing rooms) (**)

(**) Piano must be tuned before use at additional cost.

Work trestle tables available

70 Red Opus Musician orchestra chairs

40 Green straight backed general use chairs

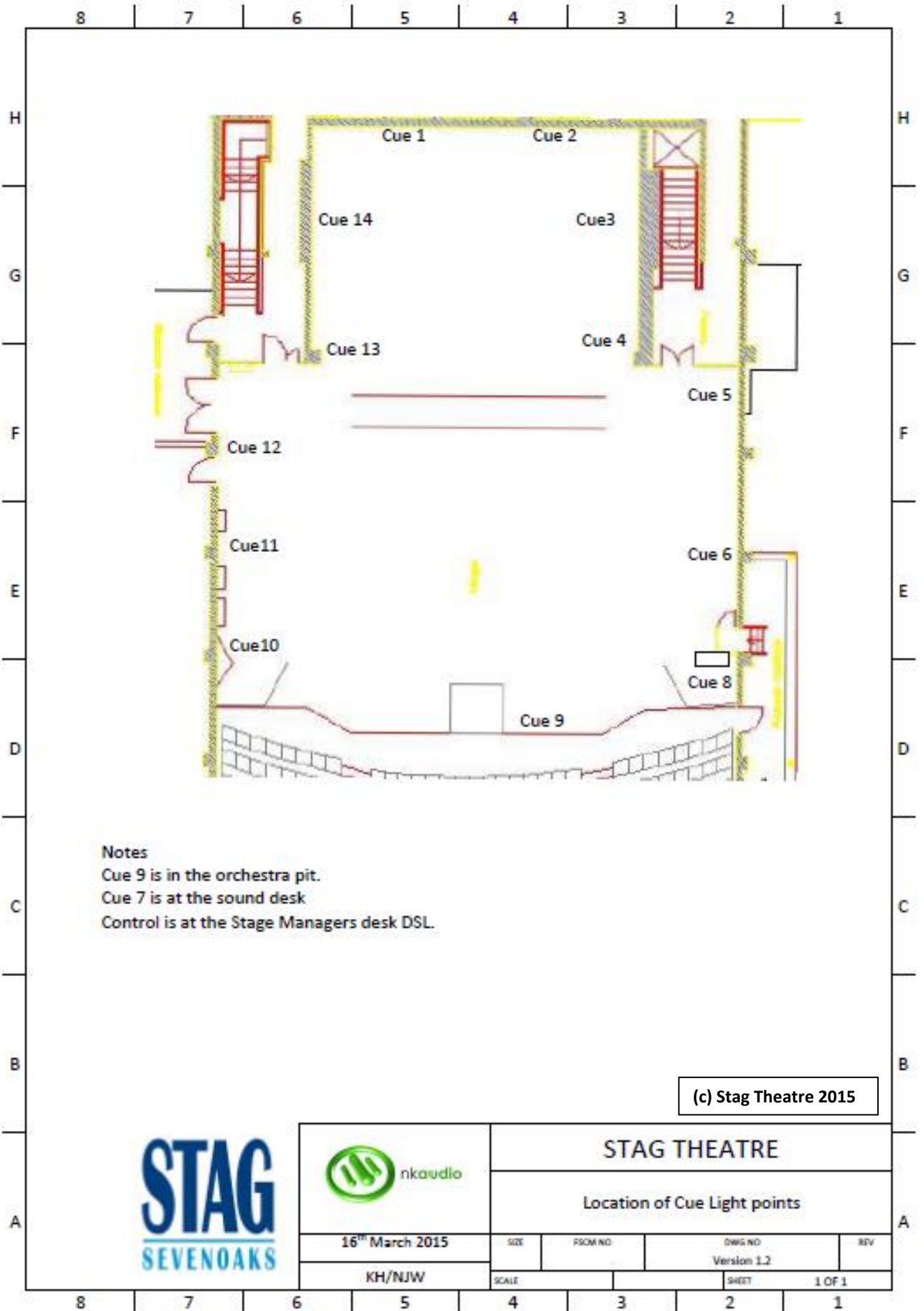
110 general use black chairs

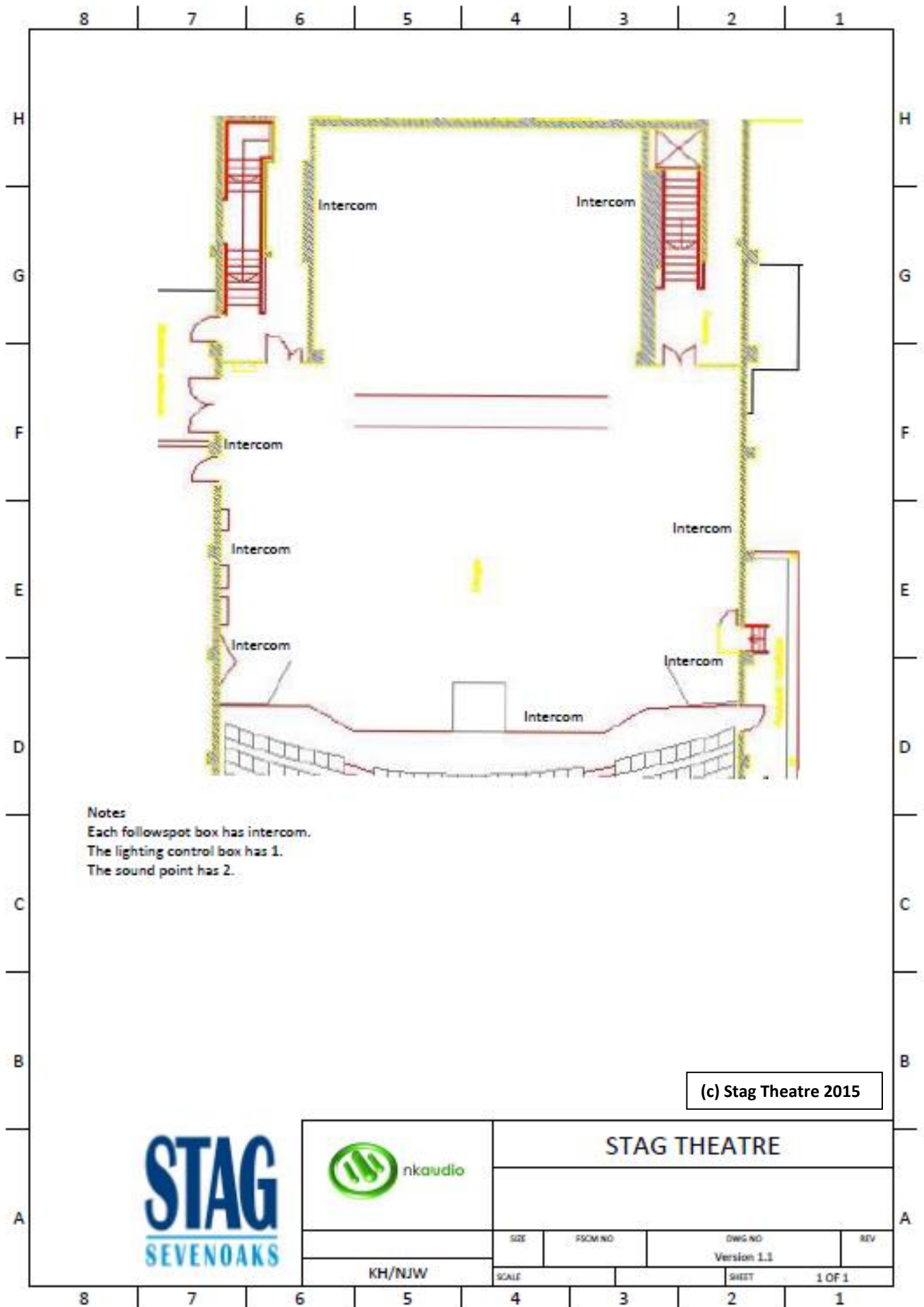
Other

Cue lights (see diagram below)

10 x Tecpro BP111 + SMH210 Headsets (see diagram below)

- Prompt desk
 - o Show relay backstage paging facility
 - o Cue light control
 - o Cans
 - o monitors showing full stage / pit (MD) / auditorium
- Show relay in all dressing rooms and at stage door
- Stage video feed at stage door





Stag Plaza Equipment List

Sound

CD player

3.5mm jack in (AUX lead (for iPods & laptops etc))

PV14 Mixer Desk (1 Aux and 1 FX Send)

4 x ElectroVoice Speakers (one in each corner of the room).

Cable as needed (please try and inform us in advance so we can ensure we have the correct type of sufficient length)

PV 2600 Amp

Lighting

(i) ETC Smartfade 12/48 lighting console or

(ii) ETC Ion lighting console

4 Pillars with 2 x 13 amp and 4 x 15 amp inside at floor level.

General cover of 1K Berkeys,

Some Cantatas & source 4 juniors for special effects such as gobos and spotlights

2 x JB Lighting Varyscan p2 moving lights

Please discuss your requirements with us as additional units can be added from our stock.

Rostra

6 @ 2m x 1m Aluminium framed,

2 @ 1m x 1m Aluminium framed,

12 legs @ 80cm

12 legs @ 60cm

24 legs @ 40cm

24 legs @ 20cm