

## Stag Theatre & Stag Plaza

# Technical Specifications and General Constraints

### General Constraints

The Stag Community Arts Centre functions as a excellent value, low hire charge venue in line with its objectives of serving both its community as well as that of professional hirers.

One way of maintaining a low cost base is to control the amount of technical input hours per show to an economic level in line with an all-in single hire charge. We are always pleased to discuss other requirements for which we would be happy to provide estimates on a time and materials basis. The notes below hope to convey why we think our approach meets Hirers' needs for a low-cost venue.

**Operations Meeting:** We aim to completely understand the needs of our hirers and with this in mind we hold a pre-performance operations meeting to discuss all administrative, front of house and technical requirements of your show. This is most usefully done at the Stag but we can arrange a tele-conference call with you and your technical operators if that is more suitable for you.

**Lighting :** A comprehensive fixed rig is offered, designed to meet the needs of most hirers (based on our experience of their requirements). Minor alterations to this rig to meet specific requirements are possible without charge and typically done on the day of the performance.

We prefer not to make major alterations to the rig but are happy to do so where the complexity of your show may demand it. These changes would be discussed in detail at the operations meeting in advance of the performance date. If alterations are agreed, a condition will be that the rig is returned to the fixed design. In the event that the rig is not returned to the fixed design a re-focussing charge will be made.

**Sound :** A fixed stereo system newly installed in 2015 which has been tuned to the auditorium. It is controlled by an Allen & Heath QU32 32 channel digital sound desk. The system includes mid-auditorium flown delayed infill speakers.

**Sets :** We aim to accommodate most hirer set requirements provided that we believe they meet sensible health and safety criteria – we do not want anyone exposed to undue risk on our premises and we believe that Hirers will understand our position.

We want to work cooperatively with hirers, so any hirer who feels that their set requirements may be in some way innovative or pushing the boundaries is encouraged to discuss their plans at the earliest opportunity and particularly in detail at the operations meeting.

**Pyros/Strobes /Special Effects/Other Potentially Dangerous Performance Elements** We want to accommodate as wide a range of technical innovation as possible within the bounds of normal regard for the safety of audience, performers and our staff. We are happy to discuss any such performance elements with Hirers at the earliest possible opportunity. All such performance elements will be subject to individual risk assessment (please email [operations@stagsevenoaks.co.uk](mailto:operations@stagsevenoaks.co.uk) for a risk assessment template) and may only be included in performances with express permission of Stag management and under the control of an ASP qualified technician.

## Main Theatre

### Stage dimensions

Effective acting area 10.4m wide x 12m deep  
SR wall to SL wall 18.25m  
Front of apron to rear hemp bar 12.0m  
Width of proscenium 10.45m  
Depth of apron to below pros 2.1m  
Back dock 11.5m wide x 8m deep (quarter depth occupied by bleachers)  
Dock Doors USR wall from lorry lift 2.09m wide x 1.80m high

### Grid

Grid height downstage 5.95m dropping quite suddenly to 5.20m at the hemp bars  
LX Advance Bars 1 – 4 FOH Electric winch bars 250Kg SWL  
LX 1 first above the pros. Electric winch bar 250Kg SWL  
LX 2 – 8 - Hand winch bars 250Kg SWL  
Hemps 1 – 3: At rear of stage; lift cloths + track only

Principle diagrams are given in pp2-6 below.

### Track

One full length Triple-E Unicyc with runners.  
One full length Triple-E Erail with runners.

### Masking

Six 5.2m x 2m black legs  
Various serge black legs and cloths

### Tabs

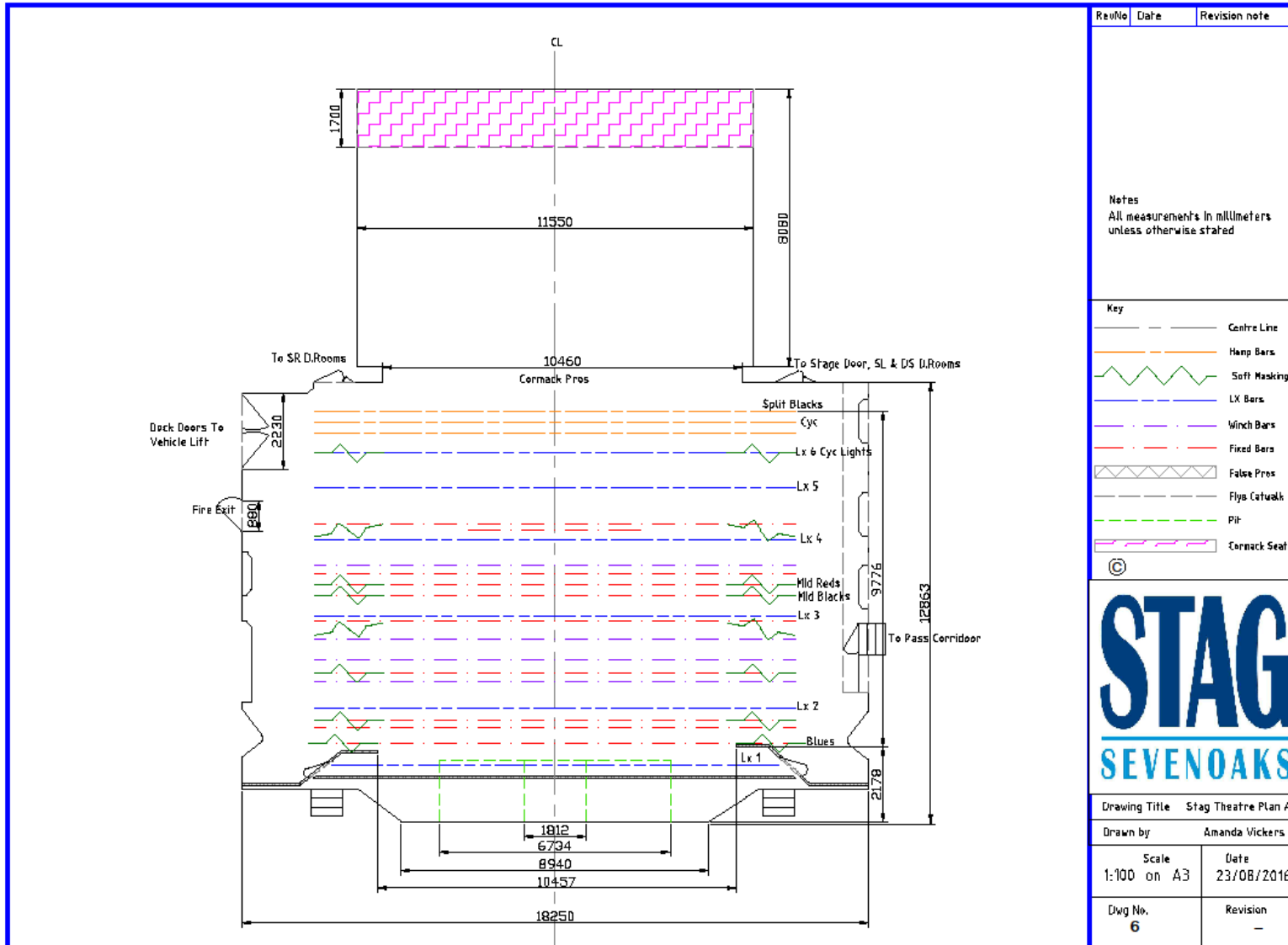
Pale blue house tabs operated by electric winch in SL wing.  
Variable speed; full open to full close over the range 6-64 seconds.

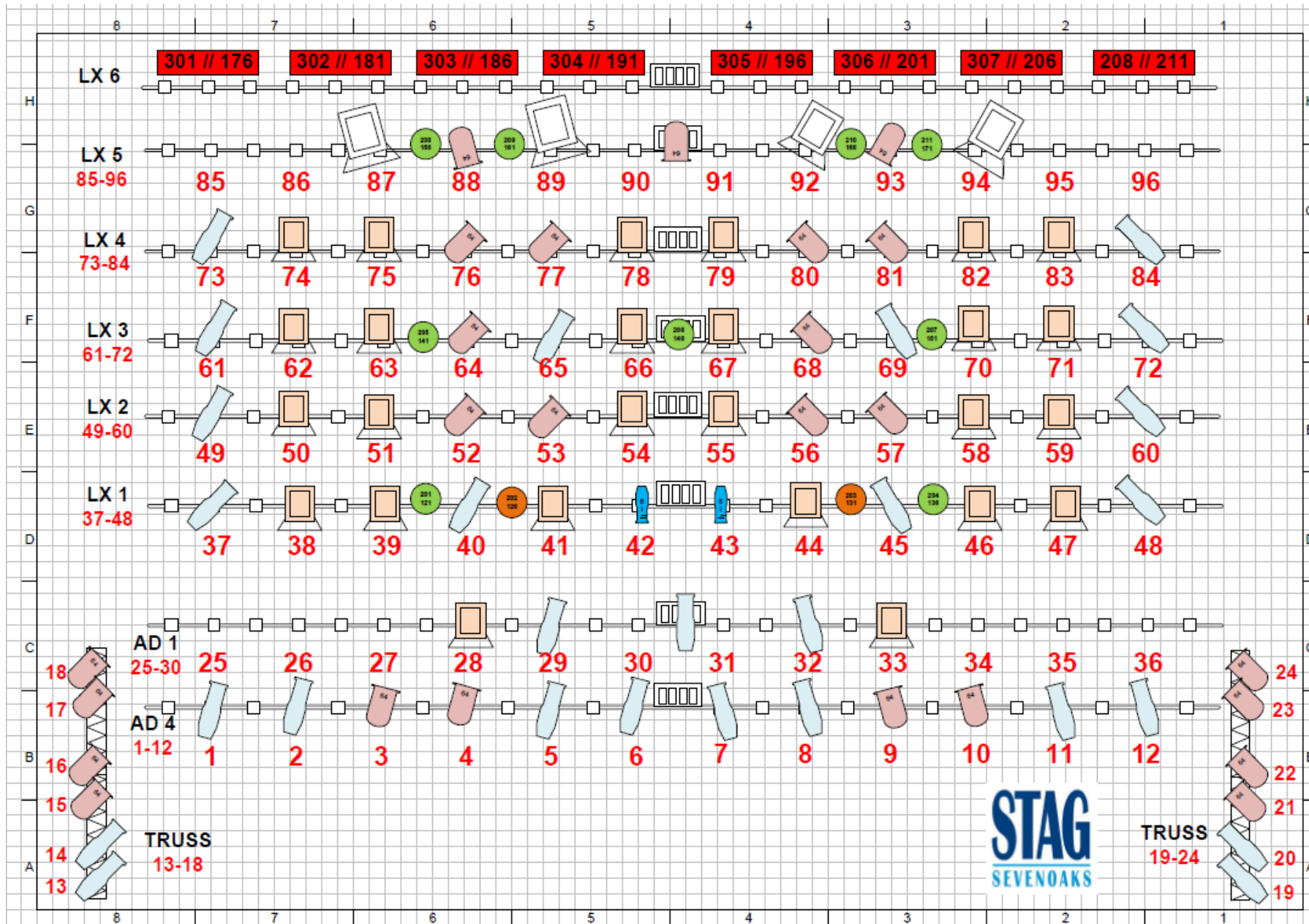
Midstage shiny blue tabs – 6.0m upstage from pros. Operated by hand pulley in SR wing  
*OR: (Midstage red tabs - 6.0m upstage from pros. Operated by hand pulley in SR wing.  
Available to be installed from storage on request (\*)*  
Midstage serge black tabs – 5.5m upstage from pros. Operated by hand pulley in SR wing

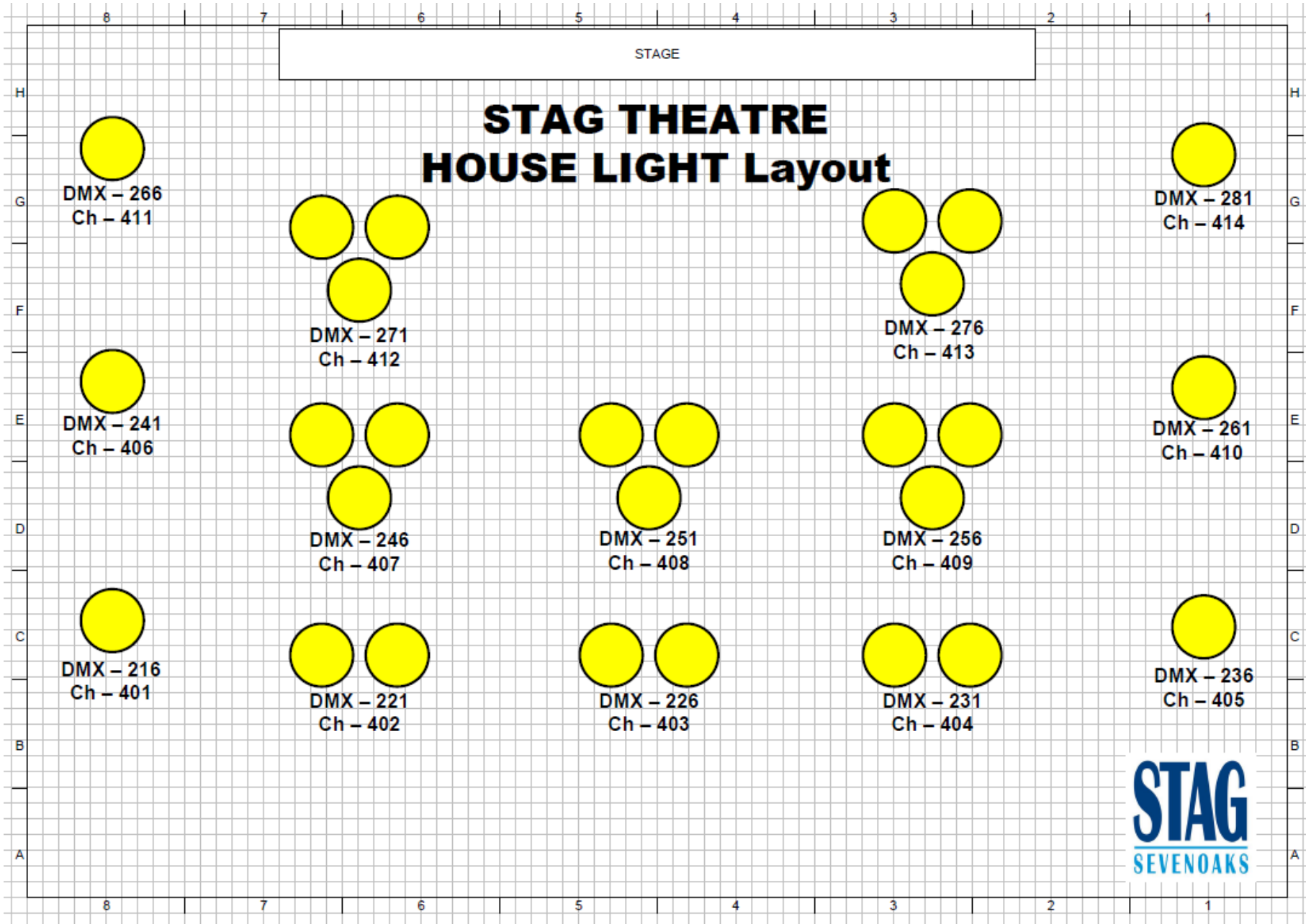
(\*) Additional set up cost. The red and blue mid tabs operate on the same track

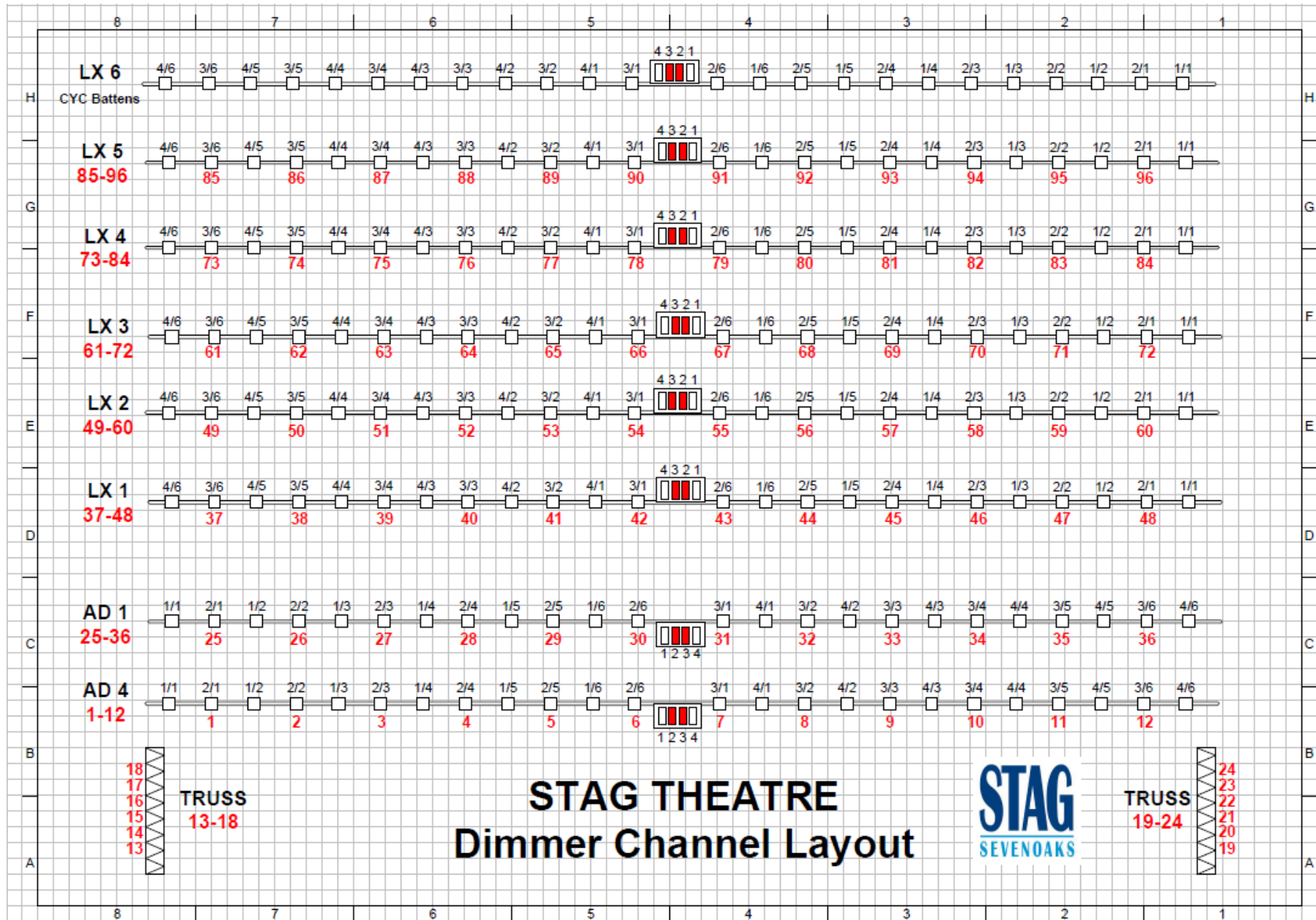
### Orchestra Pit DSC

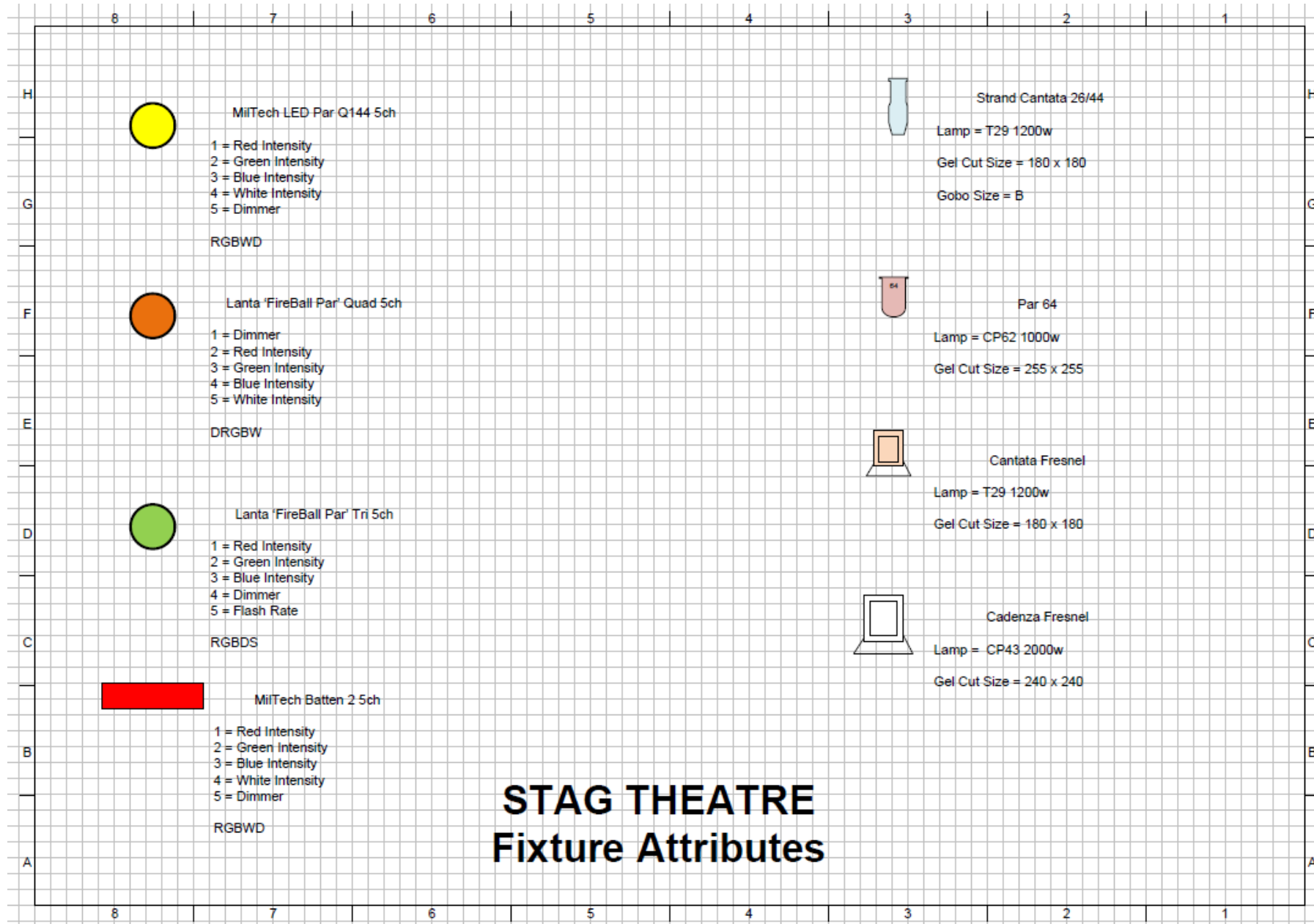
Needs four people minimum to remove lid. **This must include at least 1 member of venue crew.** Others may be provided by the hirer but for safety, personnel must be acceptable to the venue. Extra personnel can be provided by the venue at additional cost.











## STAG THEATRE Fixture Attributes

## **Backstage Facilities**

### **Dressing Rooms**

**The Stag has eight dressing rooms, five principal and three group:**

Stage Level SR

SR1 – Capacity: 4 incl. shower, sink and toilet

SR2 – Capacity: 4 incl. shower, sink and toilet

Stage Level SL

SL1 – Capacity: 4 Incl. shower and sink. Toilet Adjacent

SL2 – Capacity: 4 Incl. shower and sink. Toilet Adjacent

SL3 – Capacity: 2

Basement

The Crown– Capacity: 30, toilets M/F adjacent

The Majestic – Capacity: 30, toilets M/F adjacent

The Palace – Capacity: 20, toilets M/F adjacent

### **Lighting**

ETC ION XE20 Console (2 Universes of DMX)

### **Additional LX Equipment**

2 x Teclumen Arena 1200 MSR follow spot each with colour magazine  
(operators provided at additional charge)

An assortment of gobos

10 x Par 64

6 x 1.5 KW Fresnel

4 x 1 KW CCT Silhouette SIL15 Profiles

1 x 30cm Mirror ball and rotator

1 x 75cm Mirror ball and rotator

6 x heavy duty floor booms with arms

1 x Atomic DMX Strobe (\*)

8 x Chauvet Colorado colour battens (RGBWA LED) (freestanding) (\*)

4 x Mac700 (700W) moving head profile (CMY colour mixing & gobo wheel) (\*)

Le Maitre MVS DMX controlled haze (\*)

JEM Magnum Pro 2000 DMX controlled smoke (\*)

2 x Kam iLink GBC DMX controlled laser pattern projectors (\*)

2 x 5m x 6m RGB DMX Controlled Starcloths (fills the stage area) (\*)

(\*) Additional charge

### **Heavy Mains (DSL)**

2 x 63 1Ø

1 x 63 3Ø

63 3Ø Bus Bar



## Sound

Fixed Stereo rig balanced for the auditorium:

EV ELX115P Tops

EV ELX118P Subs

Delay monitors: 4 x Brooke INH10

Stage monitors: 2 x RCF (Flown on LX1)

Extra Monitors 2 x EV ELX112

5 Spare amp channels at 500W each

(4 x Speakon Patch to stage 2 x SL, 2 x SR)

Allen & Heath QU32 sound desk: 32 input channels

Permanent Analogue Multicore to stage (32 send 4 return)

2 x Tascam CD – 200SB including USB

3.5mm jack in (AUX lead (For iPods & laptops etc.))

## **Microphones**

7 x Shure SM57

3 x Shure SM58

4 x Beyer Dynamic handheld vocal microphones

2 x AKG C3000 condenser microphone

1 x AKG D310 handheld microphone

1 x AKG C747 condenser lectern microphone

1 x Crown LM300A lectern microphone

2 x Beyer Dynamic Opus 51 surface / boundary microphones

Sennheiser drum kit set (with 2 pencil overhead microphones)

Additional 6 x pencil microphones

## **Wireless microphones (Additional cost)**

Sennheiser XSW 12-B beltpack and lapel microphone (channel 606.900MHz)

Sennheiser XSW 35-B hand held microphone (channel 606.500MHz)

Extra microphones (wired or wireless) can be provided at additional charge

## **Additional sound equipment**

29 x RAT Illuminated music stand

1 x RAT Illuminated conductor's stand

12 x boom microphone stands

8 x DI box

Portable mains / battery operated mono PA system including microphone

Ideal for rehearsals or speeches (additional charge)

- 3 channel input:

- XLR
- ¼" socket
- L/R phono

## Miscellaneous Kit

### Risers

- 12 @ 2m x 1m Aluminium framed,
- 2 @ 1m x 1m Aluminium framed,
- 12 legs @ 80cm
- 12 legs @ 60cm
- 24 legs @ 40cm
- 24 legs @ 20cm

### Pianos

- Korg SP-250 electric piano (\*)
  - Full range 88 weighted action keys.
  - Built in metronome plus reverb and chorus effects.
  - Built in speakers for rehearsal use.
  - External speaker for other use.

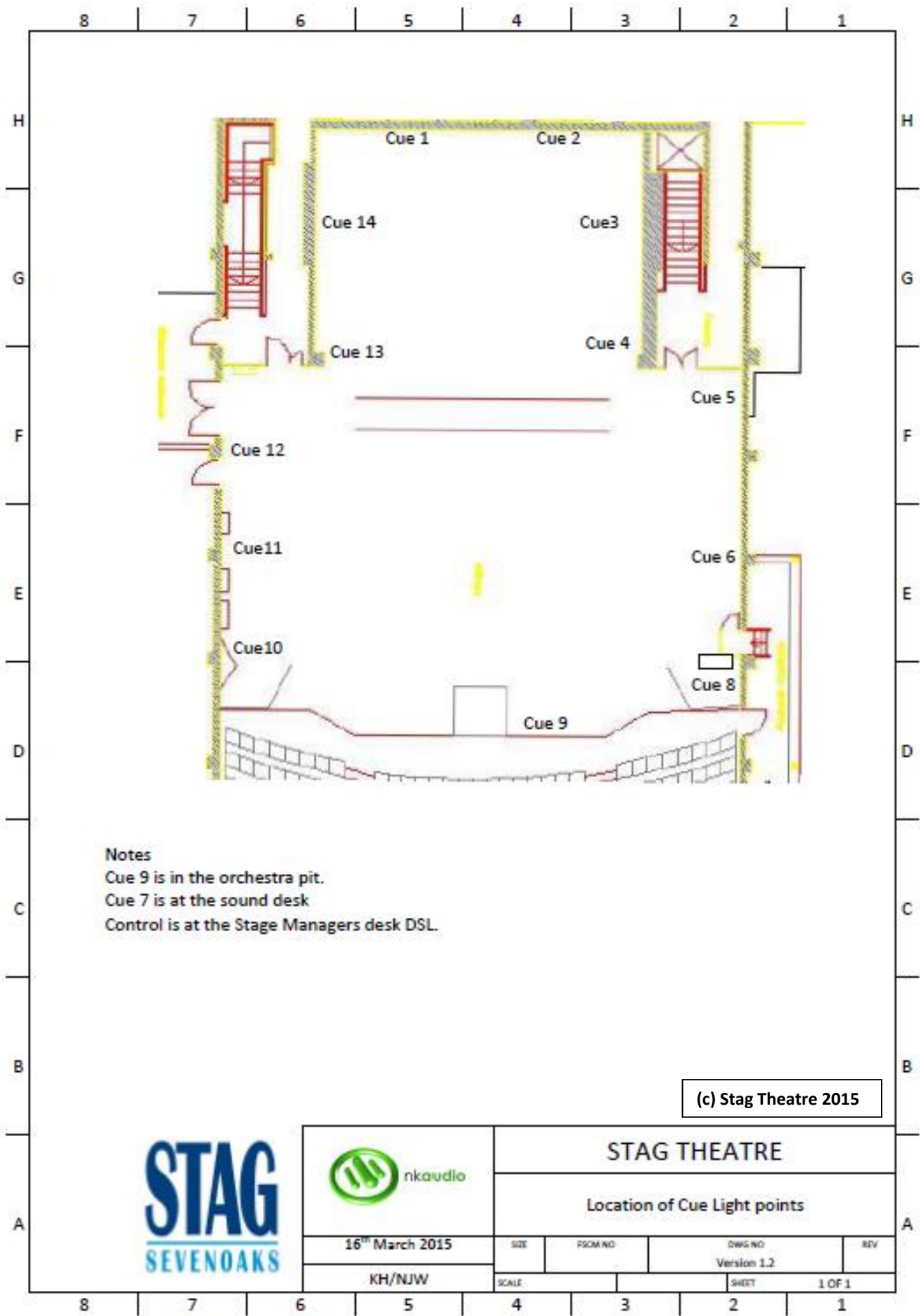
(\*) additional cost

Upright (Stage, Plaza or principal dressing rooms) (\*\*)  
(\*\*) Piano must be tuned before use at additional cost.

Work trestle tables available  
70 Red Opus Musician orchestra chairs  
40 General use folding chairs

### Other

- Cue lights (see diagram below)
- 10 x Tecpro BP111 + SMH210 Headsets (see diagram below)
  - Prompt desk
    - Show relay backstage paging facility
    - Cue light control
    - Cans
    - monitors showing full stage / pit (MD) / auditorium
  - Show relay in all dressing rooms and at stage door



Notes  
 Cue 9 is in the orchestra pit.  
 Cue 7 is at the sound desk  
 Control is at the Stage Managers desk DSL.

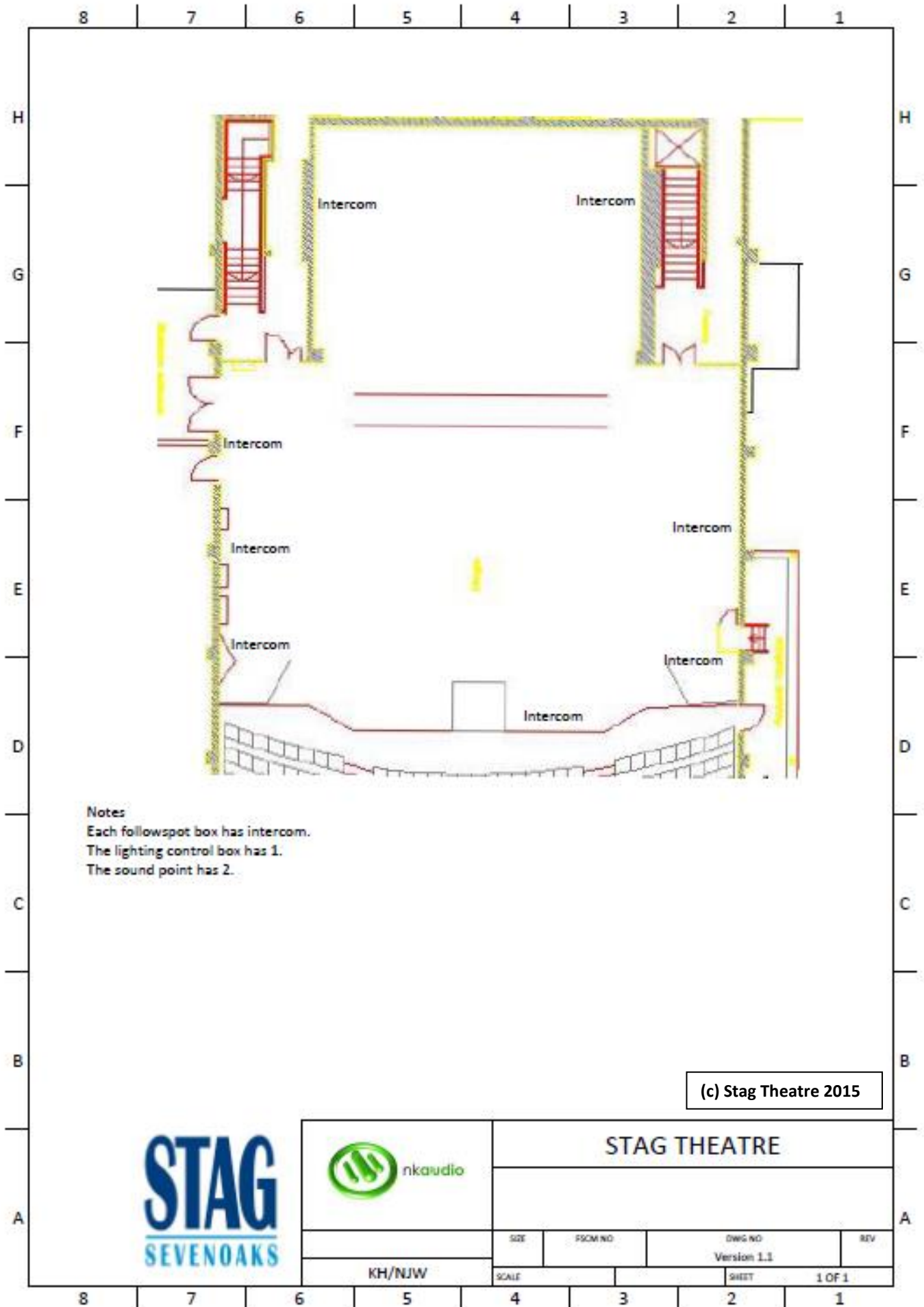
(c) Stag Theatre 2015



STAG THEATRE

Location of Cue Light points

16 <sup>th</sup> March 2015		SIZE	FORM NO	DWG NO	REV
KH/NJW		SCALE		Version 1.2	
			SHEET	1 OF 1	



## **Stag Plaza Equipment List**

### **Sound**

Cat6 connection between stage and technical point

CD player

3.5mm jack in (AUX lead (for iPods & laptops etc))

PV14 Mixer Desk (1 Aux and 1 FX Send)

4 x ElectroVoice Speakers (one in each corner of the room).

*Cable as needed (please try and inform us in advance so we can ensure we have the correct type of sufficient length)*

PV 2600 Amp

### **Lighting**

Cat6 connection between stage and technical point

Theatrical lighting control

(i) ETC Smartfade 12/48 lighting console or

(ii) ETC Ion lighting console

4 Pillars with 2 x 13 amp and 4 x 15 amp inside at floor level.

General cover of 1K Berkeys,

Some Cantatas & source 4 juniors for special effects such as gobos and spotlights

2 x JB Lighting Varyscan p2 moving lights

*Please discuss your requirements with us as additional units can be added from our stock.*

### **Audio / Visual**

Projector and screen:

BenQ LH890UST HD 1080p 16:9 laser with HDMI connection

### **Rostra**

6 @ 2m x 1m Aluminium framed,

2 @ 1m x 1m Aluminium framed,

12 legs @ 80cm

12 legs @ 60cm

24 legs @ 40cm

24 legs @ 20cm