

STAG THEATRE

Technical Specifications and General Constraints

General Constraints

The Stag Community Arts Centre is an excellent value & low hire charge venue. It operates as a Not-For-Profit charity with the objective of providing professional facilities for community and touring hirers.

We maintain a low-cost base by providing a one-stop hall-hire package which our experience tells us provides most of the facilities that the majority of our hirers need. We are always pleased to discuss other requirements for which we would be happy to provide estimates on a time and materials basis. The notes below hope to convey why we think our approach meets hirers' needs for a good-value venue.

Operations Meeting

We aim to completely understand the needs of our hirers and with this in mind we hold a pre-performance operations meeting to discuss all administrative, front of house and technical requirements of your show. This is most usefully done face to face at The Stag but we can arrange a tele-conference or video conference call with you and your technical staff if that is more suitable for you.

Lighting

A comprehensive fixed rig is offered, designed to meet the needs of most hirers (based on our experience of their requirements). Minor alterations to this rig to meet specific requirements are possible and are done on the day of your hire. Any other alterations to the fixed lighting rig must be agreed in advance and a condition will be that the rig is returned to the fixed design. If the rig is not returned to the fixed design a re-focussing charge will be made.

Sound

The theatre auditorium has an in-house PA system which has been tuned to the space. It is controlled by a Behringer X32 digital sound desk with two S16 Stage boxes. The system includes mid-auditorium flown delay speakers, two under-stage subs and four front fill speakers.

The Stag Plaza and the Footlights Bar each have dedicated sound systems.

Sets

We aim to accommodate most hirer set requirements provided that we believe they meet sensible health and safety criteria – we do not want anyone exposed to undue risk in our premises and we believe that hirers will understand our position.

We want to work cooperatively with hirers to help you put on your show. If you feel that your set requirements may be in some way innovative or pushing the boundaries, you are encouraged to discuss your plans with us at the earliest opportunity and particularly in detail at the operations meeting. For discussions about technical queries or to discuss your adherence to CDM regulations with our HSE representative please make contact through the Events Planning Manager (Terry.Smith@stagsevenoaks.co.uk, 01732 451548)

Pyros / strobes / special effects/ fire / other potentially dangerous performance elements in your show

We want to accommodate as wide a range of technical innovation as possible within the bounds of normal regard for the safety of audience, performers and our staff. We are happy to discuss any such performance elements with hirers at the earliest possible opportunity. All such performance elements will be subject to individual risk assessment by you and may only be included in performances with written approval of The Stag management and under the control of a suitably qualified technician.

Please email operations@stagsevenoaks.co.uk if you need a blank risk assessment template for you to complete and return to us.

Technical Specifications

Technical equipment is shared across the venue and is listed subject to availability and pre-booking.

(1) Stag Theatre

- a. Main stage dimensions
- b. Theatre backstage
- c. House lights channel designation
- d. Main theatre lighting rig
- e. Dimmer channel layout
- f. Backstage
 - i. Dressing rooms
 - ii. Lighting
 - iii. Power
 - iv. Sound
 - v. Music stands & portable PA
 - vi. Miscellaneous

(2) Stag Plaza

- a. Stag Plaza dimensions
- b. Stag Plaza lighting rig
- c. Stag Plaza sound
- d. Stag

(3) Footlights Bar

(4) Limelight Room

(1) Main Theatre**Stage dimensions**

- Effective acting area 10.4m wide x 12m deep
- SR wall to SL wall 18.25m
- Front of apron to rear hemp bar 12.0m
- Width of proscenium 10.45m
- Depth of apron downstage of proscenium: 2.1m
- Back dock 11.5m wide x 8m deep
 - Dock Doors USR wall - 2.09m wide x 1.80m high

Grid

- Grid height downstage 5.95m dropping quite suddenly to 5.20m at the hemp bars
- LX Advance Bars 1 – 4 FOH electric winch bars 250kg SWL
- LX 1 first above the pros. electric winch bar 250kg SWL
- LX 2 – 8 - hand winch bars 250kg SWL
- Hems 1 – 3: at rear of stage; to lift cloths + track only

Diagrams are given in pp2-6 below.

Track

- One full length (Halls) T60 with runners. (Fixed DS)
- One full length (Halls) T60 with runners. (Moveable)
- One full length (Triple-E) Erail with runners. (Moveable)

Masking

- Six 5.2m x 2m black legs
- Various serge black legs and cloths

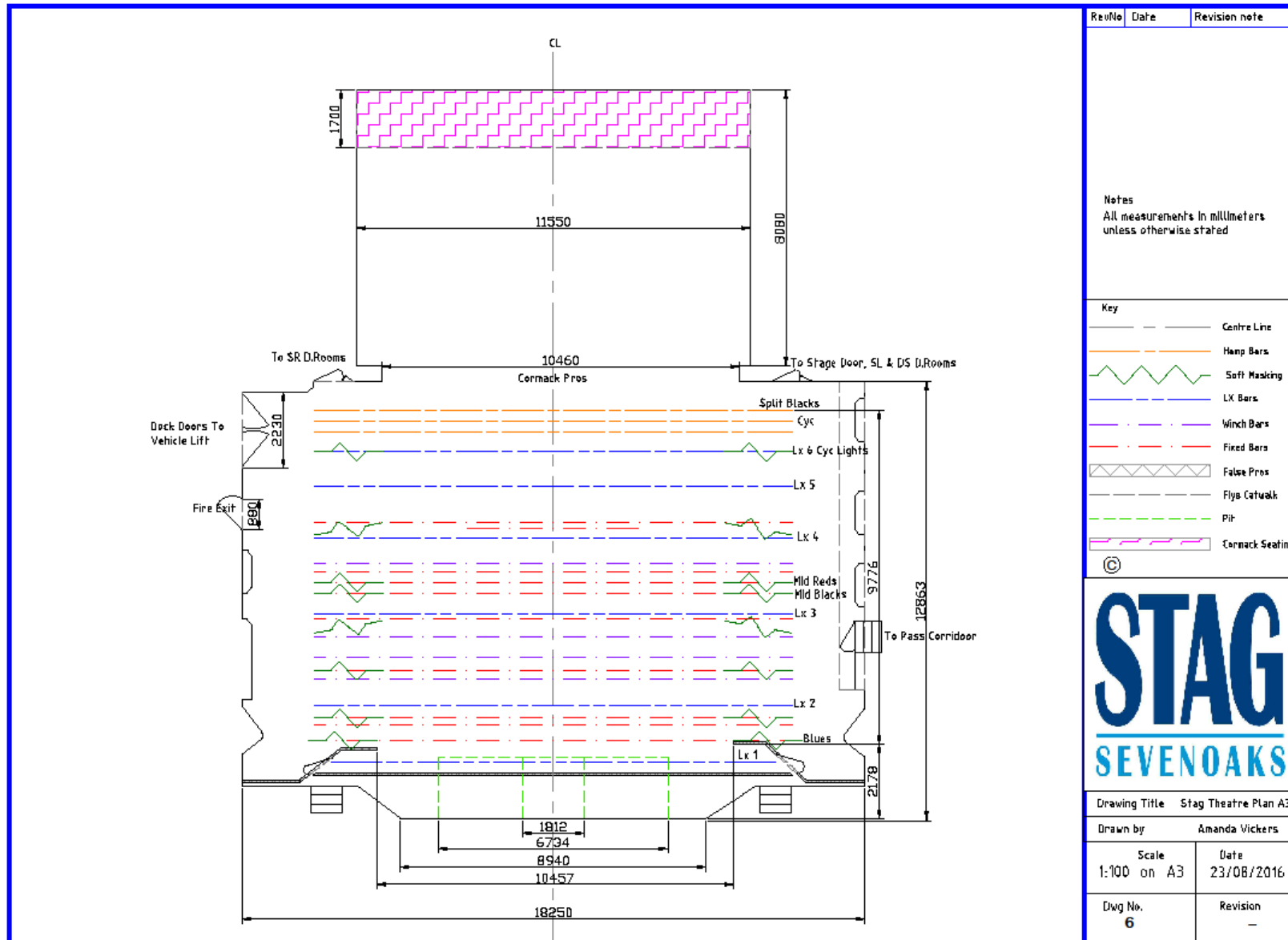
Tabs

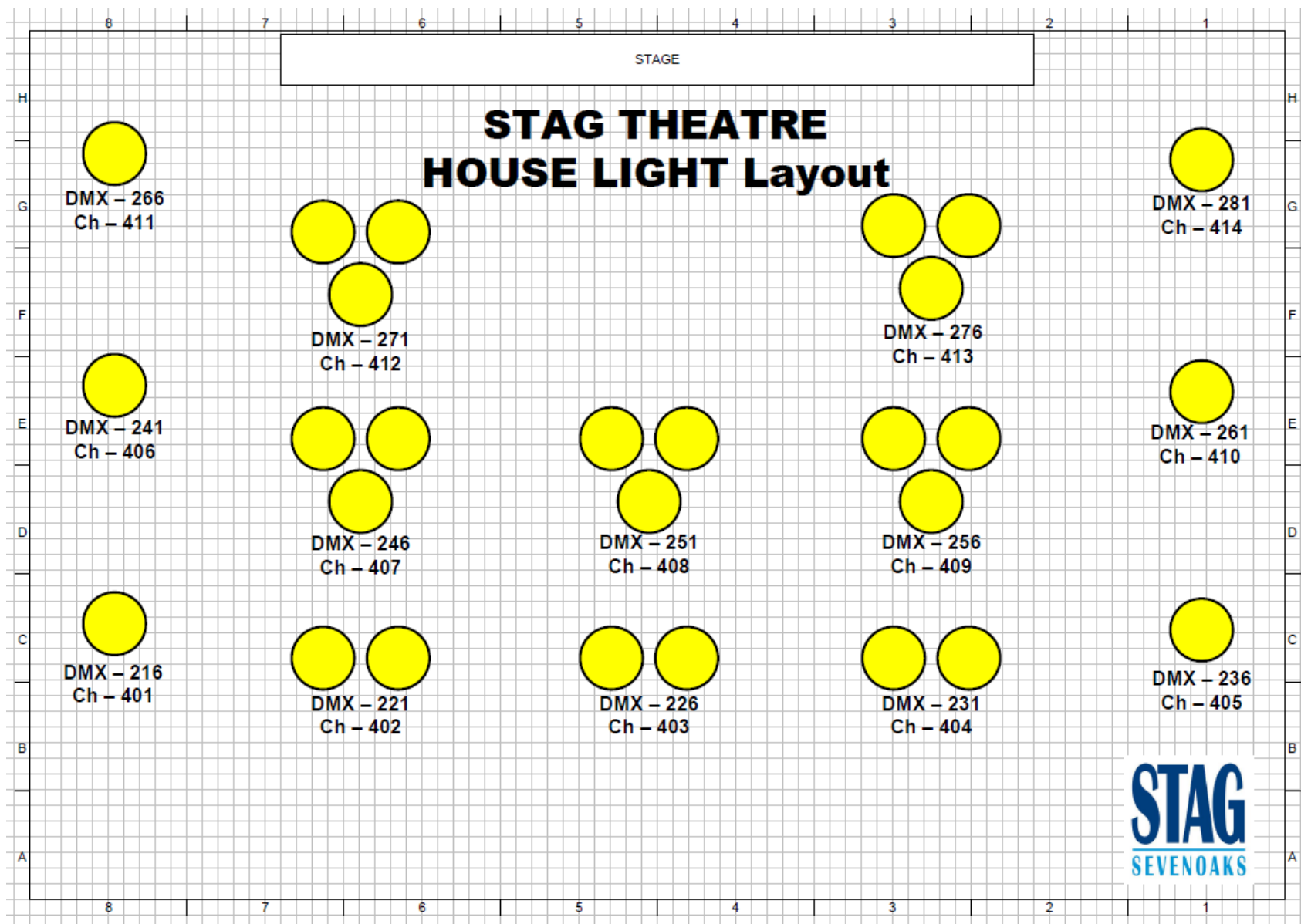
- Pale blue house tabs operated by electric winch in DSL wing.
 - Variable speed; full open to full close over the range 6-64 seconds.
- Midstage shiny blue tabs – 6.0m upstage from pros. Operated by hand pulley in SR wing
OR: (Midstage red tabs - 6.0m upstage from pros. Operated by hand pulley in SR wing.
Available to be installed from storage on request (*))
(*)) Additional set up cost. The red and blue mid tabs operate on the same track
- Midstage serge black tabs – 5.5m upstage from pros. Operated by hand pulley in SR wing

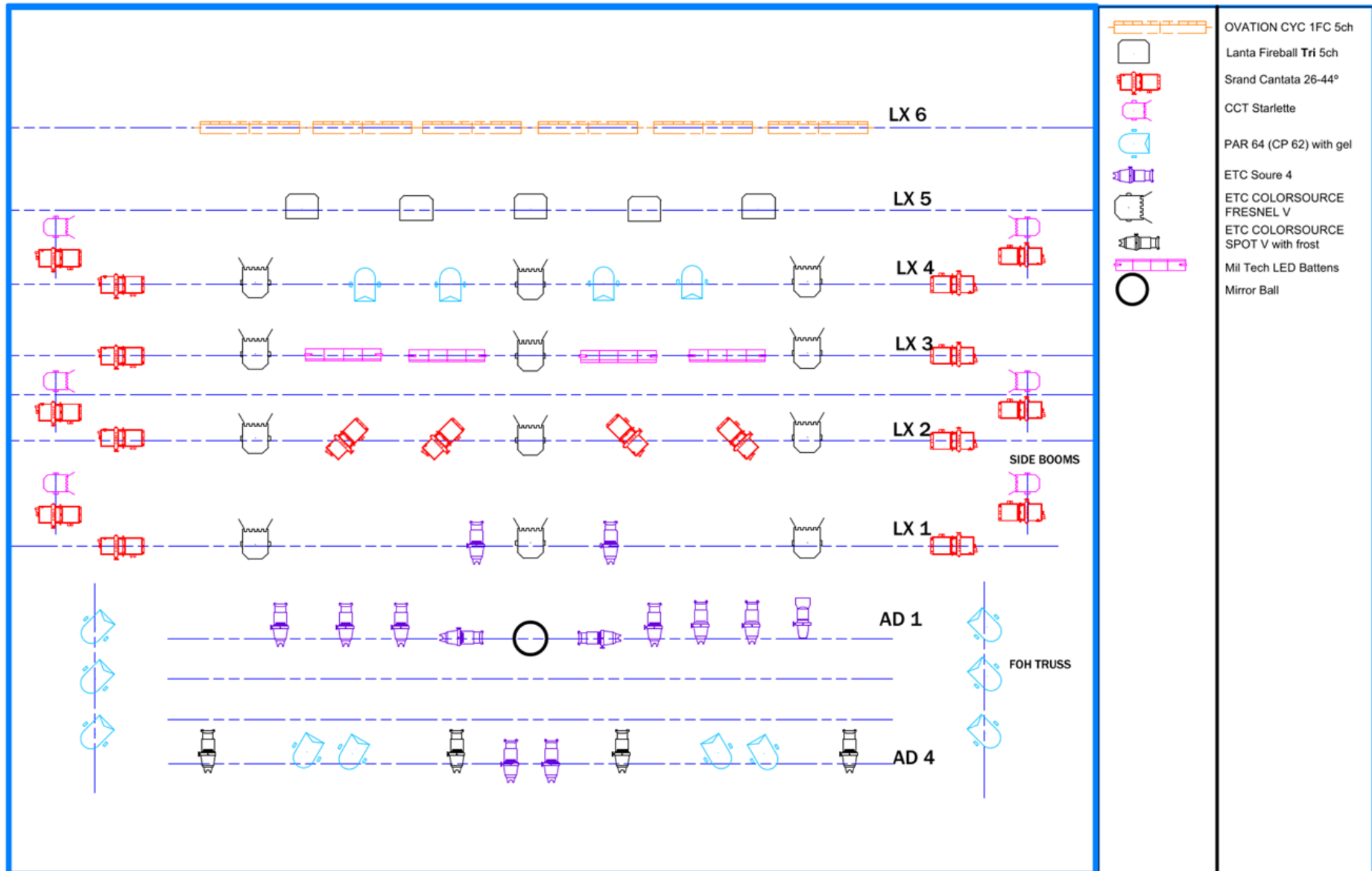
Orchestra Pit DSC

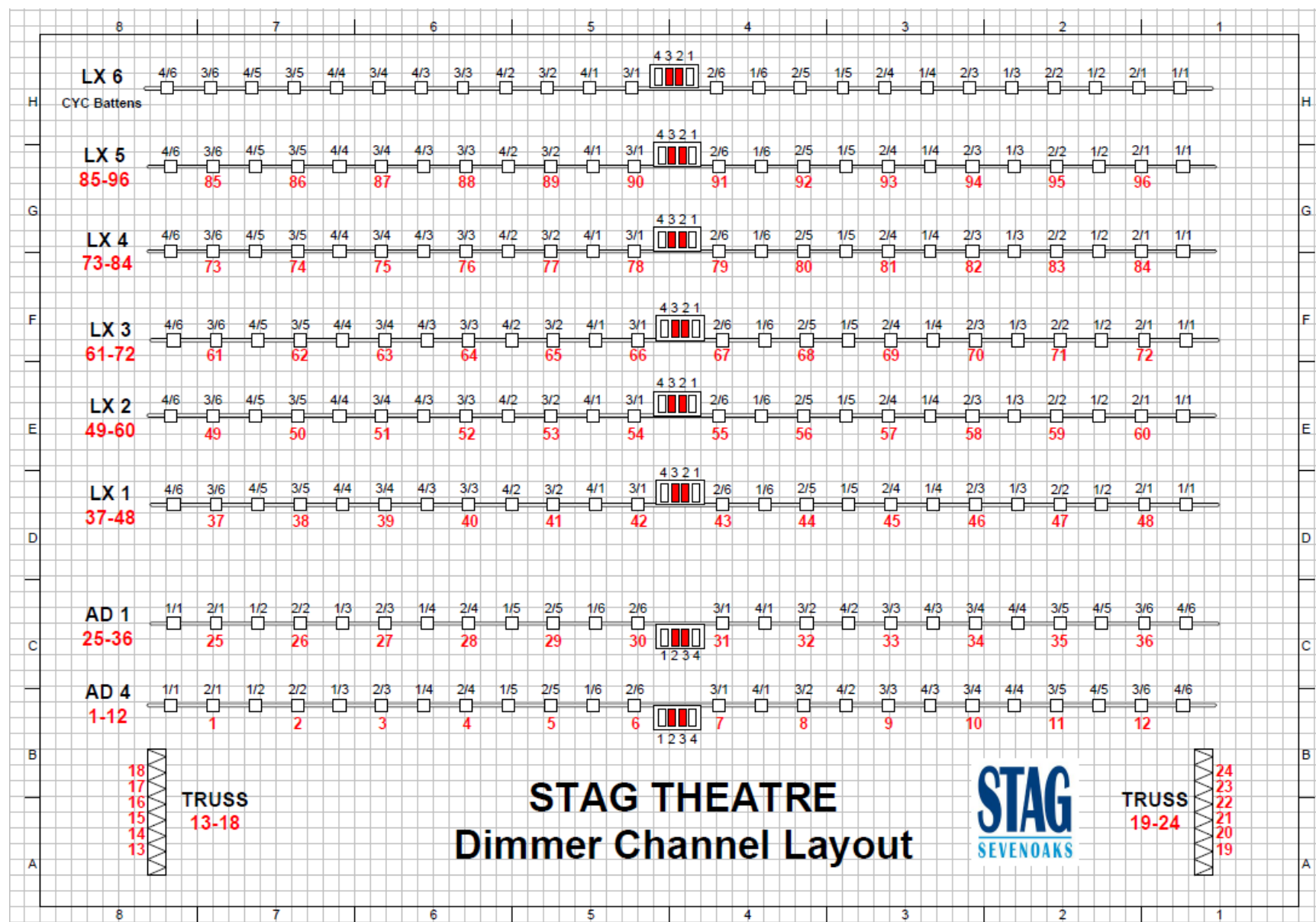
Needs four people minimum to remove lid. **This must include at least one member of venue staff.**

Others may be provided by the hirer but for safety, personnel must be acceptable to the venue. Extra personnel can be provided by the venue at additional cost.









Theatre Backstage Facilities

Dressing Rooms

The Stag has eight dressing rooms, five principal and three group:

Stage Level SR

- SR1 – Capacity: 4 incl. shower, sink and toilet
- SR2 – Capacity: 4 incl. shower, sink and toilet

Stage Level SL

- SL1 – Capacity: 4 Incl. shower and sink. Toilet adjacent
- SL2 – Capacity: 4 Incl. shower and sink. Toilet adjacent
- SL3 – Capacity: 2 Toilet adjacent

Basement

- The Crown– Capacity: 30, toilets M/F adjacent
- The Majestic – Capacity: 30, toilets M/F adjacent
- The Palace – Capacity: 20, toilets M/F adjacent

Lighting

- ETC ION XE20 Console (3 Universes of DMX)

Additional LX Equipment

- 2 x Teclumen Arena 1200 MSR follow spot each with colour magazine (operators provided at additional charge)
- 1 x 75cm Mirror ball and DMX rotator
- Chauvet Eco Hazer (*)
- JEM Magnum Pro 2000 DMX controlled smoke (*)
- 2 x 5m x 6m RGB DMX Controlled Starcloths (*)
- 4 x DMX Controlled Cold Spark Fountains (*)
- 2 x Bubble Machines (*)
- 1 x ADJ DMX Snow Machine (*)
- Moving Lights (**)
- 8 x Showtec Octostrip MK2 battens (**)

(*) Additional charge

(**) Additional charge and subject to availability

Production Power (DSL)

- 1 x 63A 3 Phase
- 2 x 63A 1 Phase
- 3 x 32A 1 Phase
- 6 x 16A 1 Phase

Production Power Panel



Sound

- Fixed stereo rig balanced for the auditorium:
- EV ELX115P Tops
- EV ELX118P Subs
 - Delay monitors: 4 x Brooke INH10
 - Stage monitors: 2 x RCF (Flown on LX1)
 - Extra Monitors 2 x EV ELX112
- 5 Spare amp channels at 500W each (4 x Speakon Patch to stage 2 x SL, 2 x SR)
- Behringer X32 with 2 X S16 Stageboxes
- 3.5mm jack in (AUX lead for iPods & laptops etc.)
- Microphones are shared across the venue. In its stock, The Stag has the following:
 - 4 x Shure SM58
 - 1 x Shure PG48
 - 1 x Shure PG81
 - 7 x Shure SM57
 - 1 x Shure Beta 57a
 - 3 x Beyerdynamic Vocal Mic
 - 2 x AKG C3000
 - 1 x AKG D310
 - 1 x AKG C747
 - 1 x Crown LM300A
 - 2 x Opus 51
 - 8 x Samson C02
 - 1 x Rode NTG2
 - 4 x T.Bone MB85 Beta
 - 1 x Sennheiser Drum Mic Set
 - 7 x Single channel DI box
- More microphones can be hired at additional cost.

Wireless microphones (additional cost)

- Sennheiser XSW 12-B beltpack and lapel microphone (channel 606.900MHz)
- Sennheiser XSW 35-B handheld microphone (channel 606.500MHz)
- Sennheiser Wireless Combi kit Lapel/HandHeld
- Up to 20 ways of Sennheiser EW-DX Dante – 20 beltpacks/4 Handhelds (subject to availability)

Extra microphones (wired or wireless) can be provided at additional charge

Additional sound equipment

- 29 x RAT Illuminated music stand
- 1 x RAT Illuminated conductor's stand
- 8 x boom microphone stands
- Portable mains / battery operated mono PA system including microphone
Ideal for rehearsals or speeches (additional charge)
 - 3 channel input:
 - XLR
 - ¼" socket
 - L/R phono

Miscellaneous Kit

Risers

- 12 @ 2m x 1m Aluminium framed,
- 2 @ 1m x 1m Aluminium framed
- 12 legs @ 80cm
- 12 legs @ 60cm
- 24 legs @ 40cm
- 24 legs @ 20cm

Pianos

- Korg SP-250 electric piano (*)
 - Full range 88 weighted action keys.
 - Built in metronome plus reverb and chorus effects.
 - Built in speakers for rehearsal use.
 - External speaker for other use.

(*) Additional charge

Other

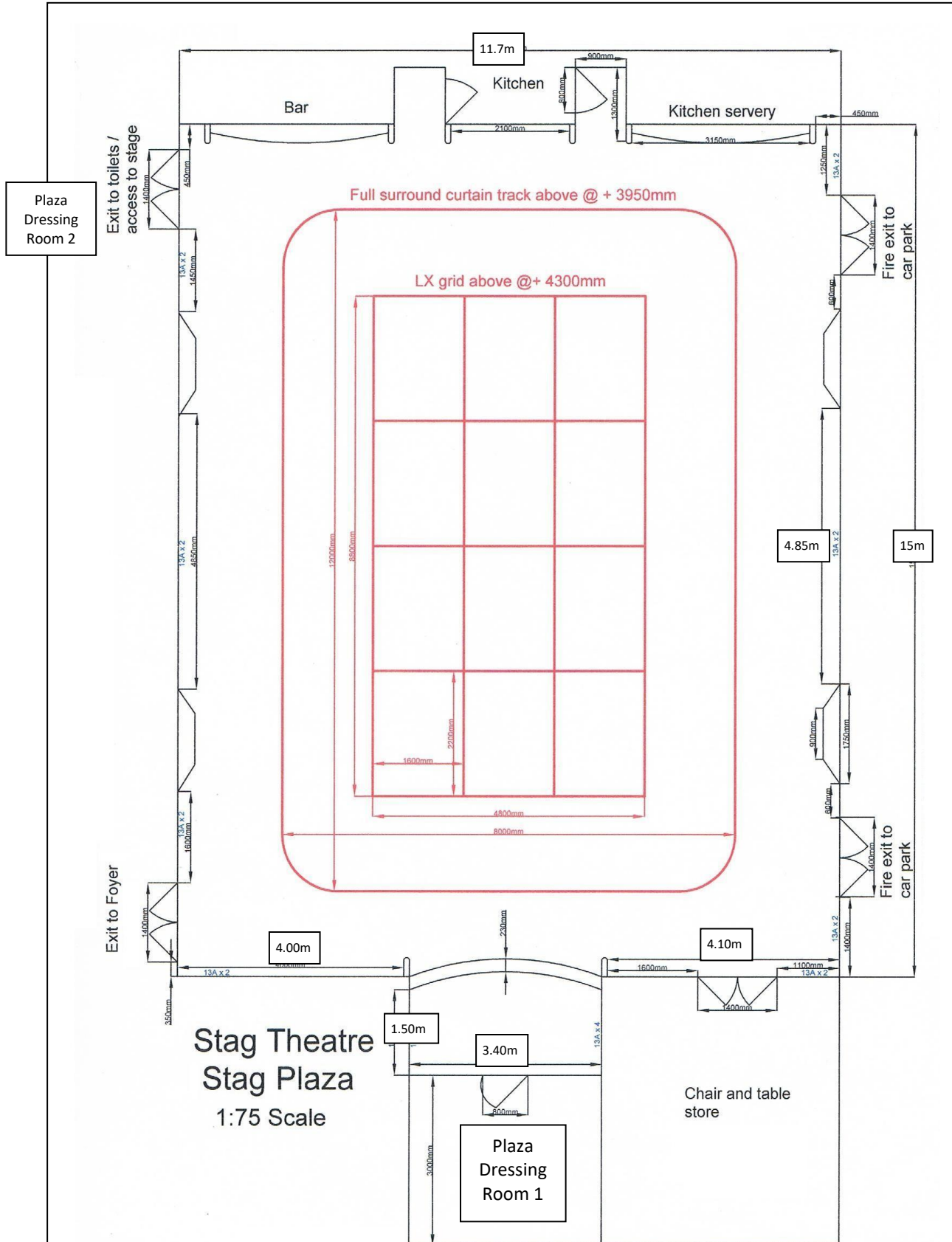
- 8 X Hollyland Solidcom C1 Pro Headsets
- 1 x Hollyland Solidcom C1 Pro Basestation (with additional wired headset)
- Prompt desk
 - backstage paging facility through the show relay
 - monitors showing full stage / pit (MD) / auditorium
- Show relay in all dressing rooms and at stage door
- Work trestle tables available
- 70 Red Opus Musician orchestra chairs
- 40 General use folding chairs

Patch

- 6 x Ethercon – Op position > Orchestra Pit Patch
- 1 x Ethercon – Op position > DSL
- 4 x Ethercon – DSL > Orchestra Pit Patch
- 1 x Ethercon – DSL > Orchestra Pit Patch
- 4 x Ethercon – DSR > Orchestra Pit Patch

(2) Stag Plaza

Stag Plaza dimensions



Lighting

- ETC ION20 lighting console (2 universes of DMX)
 - General cover of Source four PARnels,
 - 4 x Miltec RGBW Battens
 - 1 x Prolights LED Par
 - 2 x Source 4 juniors
 - 2 x JB Lighting Varyscan p2 moving lights

Sound

- Allen & Heath Q32 desk with either:
 - Standalone PA with 2 x Alto TS415A + 2 x TS18S or
 - Room PA (4 x ElectroVoice Speakers, one in each corner of the room + PV2600 amplifier)

Other Equipment

- BenQ Projector (short throw, 4000 lumens) and motorised screen located in the front stage area.
 - Self-operated HDMI connectivity to the projector and room PA
 - Self-operated 3.5mm stereo jack connectivity to the room PA
- Microphones are shared across the venue. In its stock, The Stag has the following:
 - 4 x Shure SM58
 - 1 x Shure PG48
 - 1 x Shure PG81
 - 7 x Shure SM57
 - 1 x Shure Beta 57a
 - 3 x Beyerdynamic Vocal Mic
 - 2 x AKG C3000
 - 1 x AKG D310
 - 1 x AKG C747
 - 1 x Crown LM300A
 - 2 x Opus 51
 - 8 x Samson C02
 - 1 x Rode NTG2
 - 4 x T.Bone MB85 Beta
 - 1 x Sennheiser Drum Mic Set
 - 7 x Single channel DI box
- More microphones can be hired in at additional cost.

Wireless microphones (Additional cost)

- Sennheiser XSW 12-B beltpack and lapel microphone (channel 606.900MHz)
- Sennheiser XSW 35-B handheld microphone (channel 606.500MHz)
- Sennheiser Wireless Combi kit Lapel/HandHeld
- Up to 20 ways of Sennheiser EW-DX Dante – 20 beltpacks/4 Handhelds (subject to availability)

(3) Footlights Bar

Performance venue, seminars, clubs or meetings

Lighting

- 1 x Stairville 12 channel DMX controller
- 2 x Prolights LED slim par (RGBW)
- 2 x Stairville RGBW LED floodlights (with barn doors)

Sound

- 1 x Yamaha MG12X Mixing Desk -12 channels (6 XLR Inputs)
- 2 x The Box pro Achat 204 Speakers
- 1 x The Box Pro Achat 108 Sub
- 1 x 6 input/2 return stagebox
- 2 x T.Bone MB85 handheld microphone
- 2 x microphone stands
- 1 x aux cable (minijack – stereo jack)

Miscellaneous

- Free WiFi availability
- Direct external access to the front of The Stag (London Road)
- 1 x 4-6m x 3m pipe and drape kit
- 2 x 3m x 3m medium black serge stage backing material
- The Footlights Bar is a flexible performance space with a raised stage (4.9m x 1.8m). It can seat up to 65 in cabaret format and up to 91 with theatre-style seating.

(4) Limelight Room

Meetings, seminars or clubs

The Limelight has an integrated self-operated a/v system with direct external access to the rear of The Stag (South Park car park).

- Free WiFi
- Wall mounted TV (HDMI connectivity)
- Room sound system
- The Limelight Room seats up to 16
- Self-serve tea and coffee facilities